

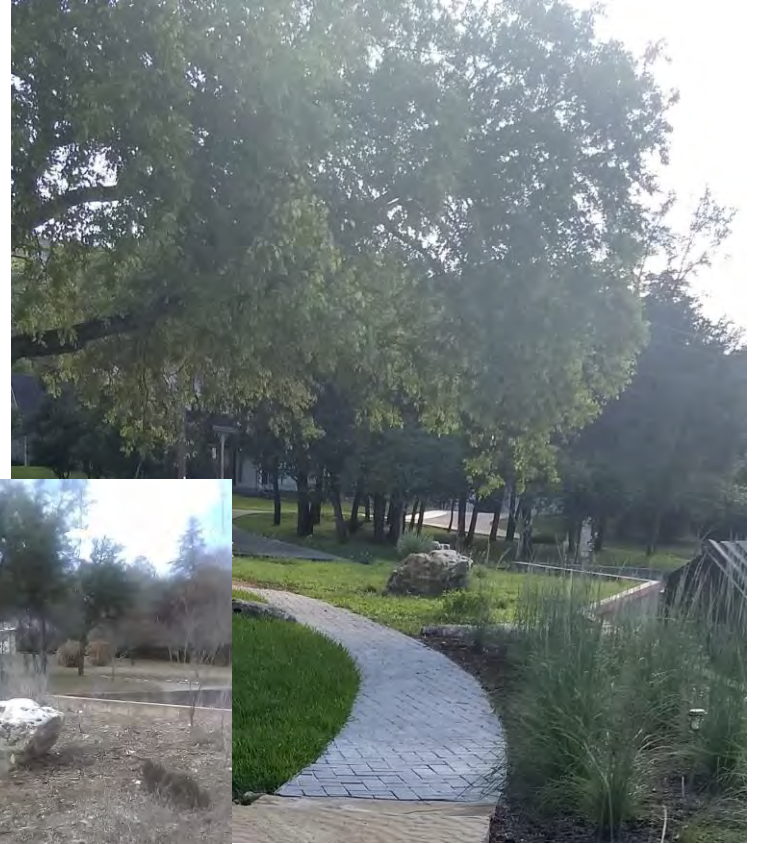
# UGRA Eduscape Garden

Evolution of the Wildflower  
Garden

Hill Country Master Naturalists



From its beginnings as a Bermuda grass patch





Early plantings

Focus on deer-resistant plants, but not necessarily native in the beginning



## Texas Wildflowers

### Quick Facts:

Wildflowers are the most diverse and colorful plants in the state. They are found in every county, and are a major attraction for visitors.

### Did You Know?

More than 3,000 species of wildflowers are found in Texas. Many are native to the state, but many others were introduced by early settlers. Some are now endangered or extinct.

Native wildflowers are one of the most beautiful natural attractions in the State Park System. They are found along the banks of rivers and creeks, in prairies, on rocky slopes, and in woodlands. They have many uses, including as food for birds and other animals. Some are also used in traditional medicine.



Most wildflowers are annuals, meaning they only live for one year. Some are perennials, meaning they live for more than one year. Some are biennials, meaning they live for two years. Some are even more unusual, such as the Texas bluebonnet, which is a perennial that only blooms every year.



Visit [www.tsnra.org](http://www.tsnra.org) or call for more info.



Cages and irrigation system





The problem with small cages! Foliage columns and deer will move the cages to get plants!

Pruned by the deer  
Vs.  
Allowed to grow to full  
size and flower

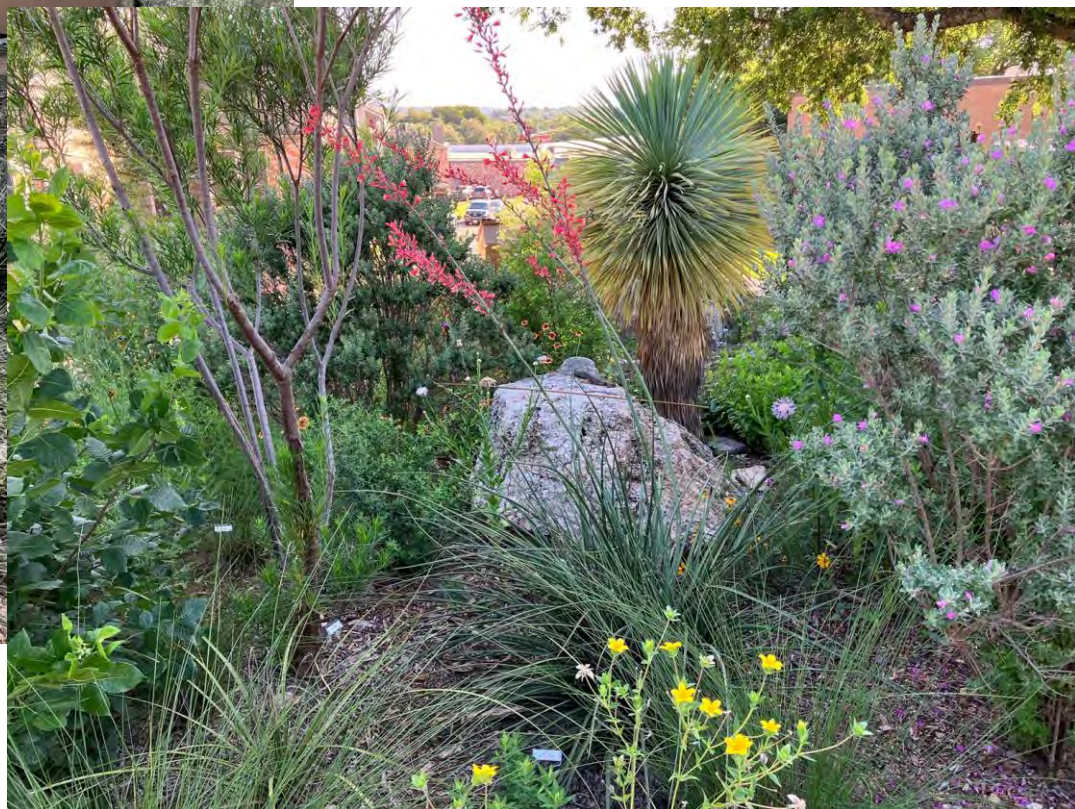




The cages grow!







Before and after fence!



Seeds to flower then  
to seed pod





Spring in the garden



Summer now that we have a fenced meadow

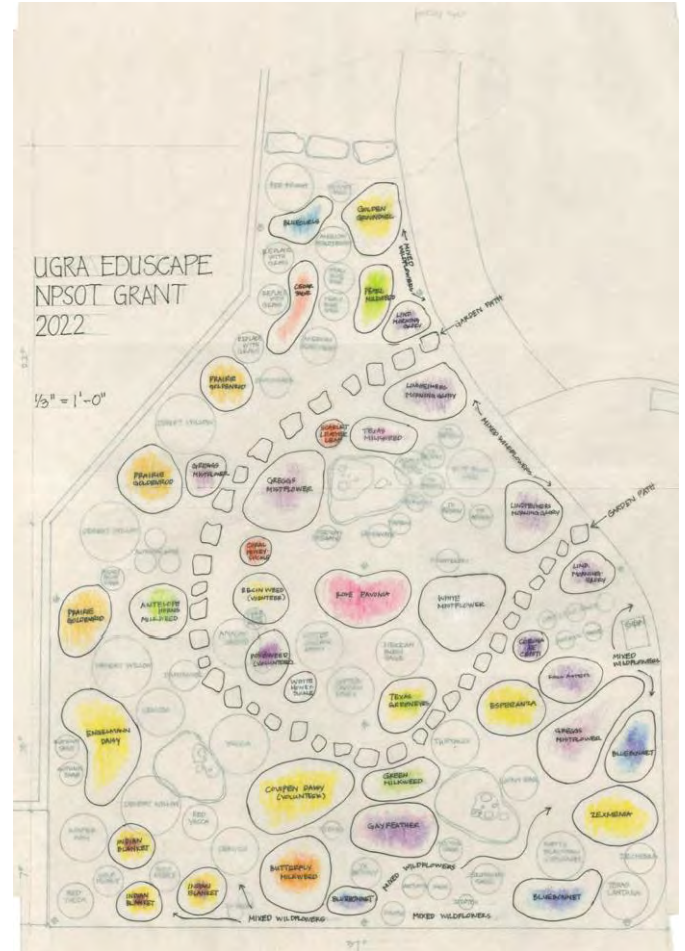


Fall into winter in the garden





NPSOT Bring Back the Monarchs Grant 2022



Milkweed





Nectar plants





Meadow garden





Insects





Queen butterfly on Texas Milkweed in bloom and producing seeds for next year



Garden path and stepping stones in the meadow



Native cactus planter



Ongoing, share  
plants with  
adjacent areas as

plants need to be  
divided,

non-natives  
replaced,

and volunteer  
plants present  
themselves in the  
garden





The evolution continues as we focus on a shade garden and deer-resistant planting areas